

Continuous Air Release/ vacuum Relief Valves

3/4", 1", 2"



Continuous air release valves are designed to provide efficient air releasing and intake for water pipelines when the system is started or shut off along with residual air removal generated during the working. Available in reinforced plastic, these valves are durable, weather-resistant, and corrosion-resistant, making them ideal for a wide range of agriculture irrigation and industrial applications

HIGHLIGHTS

- **Lightweight Construction:** High strength durable and weather resistant reinforced plastic valves easy installation and long-lasting durability.
- **Efficient Air Expulsion and Intake:** Large volume air release/intake capability during pipe filling and pump shut off.
- **Low Pressure Sealing**
- **Debris Protection:** Venting passage equipped with screen to prevent debris intrusion and blockages.
- **Versatile and Secure Fittings:** includes a threaded elbow outlet for flexible installation.

APPLICATIONS

Kinetic Air Expulsion:

When the pipeline is being filled, the air release valve remains open, expelling surplus air outside the system. Once the pipe is filled with water, the valve closes tightly, ensuring a secure and leak-free seal.

Kinetic Air Admission:

During negative pressure or vacuum conditions within the pipe, the air release valve opens to allow air inside, preventing damage to pipes and accessories by avoiding vacuum-induced stress.

Residual Air Expulsion (Automatic Air):

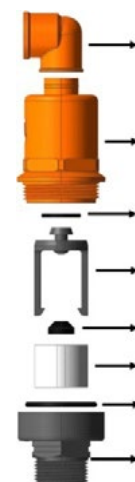
The air release valve constantly purges residual air generated in the system, even under pressurized conditions. This prevents air pockets from forming, which could affect system performance.

Technical Data (CARV 60 series)

Model No		CAVR61	CAVR62	CAVR63
Inlet Connection		¾”/1” (20/25 mm)	1” (25 mm)	2” (50 mm)
Connection Size		8	12	
Connection Type		Male Threaded (BSP/NPT)		
Maximum Working Pressure	bar	16		
Sealing Pressure	bar	0.5	0.1	0.3

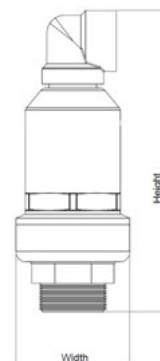
Material Specification

Part No	Description	Model No.		
		CAVR61	CAVR62	CAVR63
1	Bottom	PAGF	PAGF	PAGF
2	Bottom O-ring	EPDM/NBR	EPDM/NBR	EPDM/NBR
3	Ball Retainer	PAGF	PAGF	PAGF
4	Ball/Float	PPGF	PPGF	PPGF
5	Retainer	EPDM	EPDM	EPDM
6	Seal O-ring/Washer	EX-PP	EX-GPPS	EX-PP
7	Body	EPDM	EPDM	EPDM
8	Cap Inner	PAGF	PAGF	PAGF
9	Cap/Elbow	PPGF	-	-



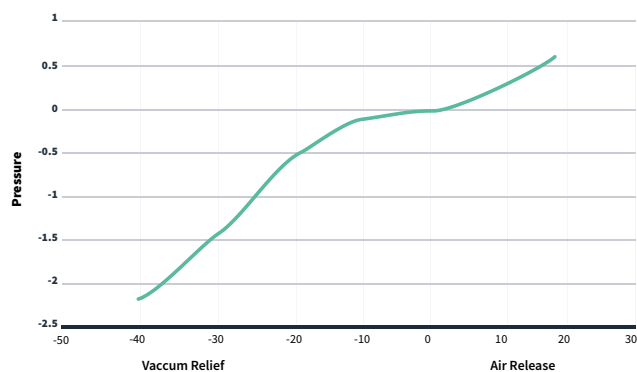
Product Dimensions

Part No	Clear Opening Diameter	Height	Width	Weight
	CM	CM	CM	KG
CAVR61	1.7	14.5	5.4	0.12
CAVR62	2.1	20	9.3	0.31
CAVR63	3.4	26.9	10.1	0.684

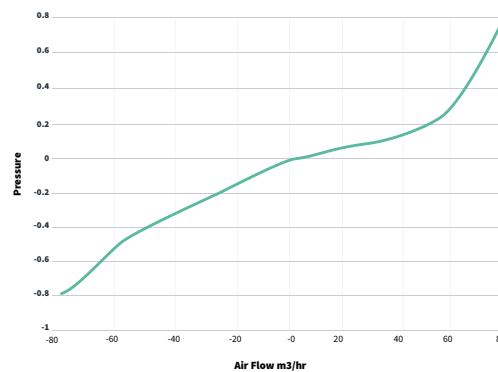


Performance Graphs

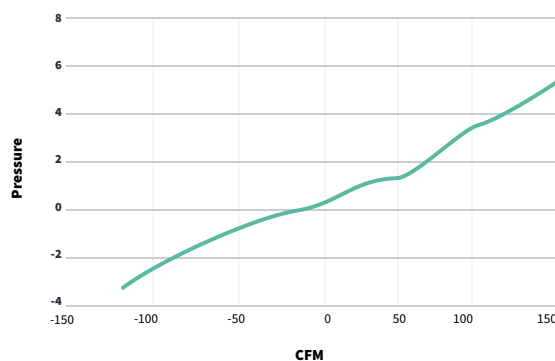
Model CAVR61



Model CAVR62



Model CAVR63



Keep in touch!

 info@metzerplas.com

 metzer-group.com

