

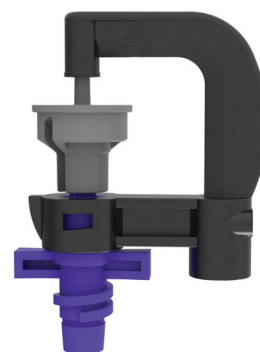
## MZ 300 SERIES

# MZ303

## Micro Sprinkler

Diverse Irrigation

Leakage Prevention Device



Designed for diverse irrigation applications, the MZ303 micro sprinkler features a bayonet coupling. It can be supplied with a leakage prevention device (LPD) for enhanced reliability and water management.

### HIGHLIGHTS

- **Versatile:** Unique swivel design ensures excellent water distribution and coverage, ideal for under-canopy irrigation in orchards, horticulture nurseries, greenhouses, and poultry farms
- Ideal for plant propagation, germination, and micro-climate creation
- **Robust:** Sturdy structure with user-friendly bayonet connection
- Made of high-quality materials for long-term field operation
- **Color-coded nozzles:** Eight colors for easy flow rate identification
- **Easy to use:** Can be mounted on a 6.0mm stake or metal rod

### TECHNICAL DATA

- Recommended working pressure: 15-30 m'
- Wetted diameter: 1.5-12.5m'
- Available tubes: 4/7mm PE/PVC
- **Recommended filtration:**
  - Nozzle size 0.8mm-1.2mm: 200 microns (80 mesh)
  - Nozzle size 1.4mm-2.3mm: 500 microns (30 mesh)

PERFORMANCE TABLE MZ303 Medium Range Rotor at 20 m'

Color Code	Nozzle Size	Flow Rate	Wetted Diameter	Precipitation Rate (mm/hr) / Spacing (m)		
	mm	lph	m	3x3	3x4	4x4
Black	0.8	34	5.5	3.8	2.8	
Purple	1.0	52	6.0	5.8	4.3	3.3
Orange	1.2	76	7.0	8.4	6.3	4.8
Blue	1.4	102	7.6	11.3	8.5	6.4

\* Tested under laboratory conditions at a height of 25cm above ground

Codes of Distribution of Uniformity

CDU < 75%	75% ≤ CDU < 80%	80% ≤ CDU < 85%	85% ≤ CDU < 90%	CDU ≥ 90%
-----------	-----------------	-----------------	-----------------	-----------

Available Connections

MZ303 Assembly

0.8 mm

1.0 mm

1.2 mm

1.4 mm



Quick thread connection



Female bayonet connection



Medium-range rotor

## PERFORMANCE TABLE MZ 303 Long Range Rotor at 20 m'

Color Code	Nozzle Size	Flow Rate	Wetted Diameter	Precipitation Rate (mm/hr) / Spacing (m)								
	mm	lph	m'	3x3	3x4	4x4	3x5	4x5	5x5	4x6	5x6	6x6
Blue	1.4	102	9.5	11.2	8.4	6.3	6.7	5.1	4.0	4.2	3.4	
Yellow	1.6	130	9.8	14.4	10.8	8.1	8.7	6.5	5.2	5.4	4.3	3.6
Green	1.8	162	10.4	18.0	13.5	10.1	10.8	8.1	6.5	6.8	5.4	4.5
White	2.0	198	10.8	22.0	16.5	12.4	13.2	9.9	7.9	8.3	6.6	5.5
Brown	2.3	260	11.4	28.9	21.7	16.3	17.4	13.0	10.4	10.8	8.7	7.2

\* Tested under laboratory conditions at a height of 25cm above ground

## PERFORMANCE TABLE MZ 303 inverted Rotor at 20 m'

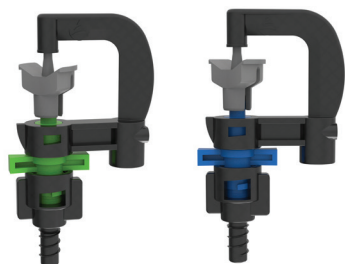
Color Code	Nozzle Size	Flow Rate	Wetted Diameter	Precipitation Rate (mm/hr) / Spacing (m)					
	mm	lph	m'	3x3	3x4	4x4			
Purple	1.0	52	9.0	5.7	4.3	3.2			
Orange	1.2	76	9.0	8.4	6.3	4.7	5.1	3.8	
Blue	1.4	102	10.0	11.4	8.6	6.4	6.8	5.1	5.7
Yellow	1.6	130	10.5	14.4	10.8	8.1	8.7	6.5	7.2
Green	1.8	162	11.5	17.9	13.5	10.1	10.8	8.1	9
White	2.0	198	11.5	22.1	16.6	12.4	13.2	9.9	11
Brown	2.3	260	12.5	29.1	21.8	16.3	17.4	13.1	14.5

\* Tested under laboratory conditions at a height of 25cm above ground

### Codes of Distribution of Uniformity

CDU < 75%	75% ≤ CDU < 80%	80% ≤ CDU < 85%	85% ≤ CDU < 90%	CDU ≥ 90%
-----------	-----------------	-----------------	-----------------	-----------

## MZ 303 Assembly



Quick thread connection




Long range rotor



Inverted rotor

## PERFORMANCE TABLE MZ303 Mist Sprayer at 20 m'

Color Code	Nozzle Size	Flow Rate	
	mm	lph	Mist Sprayer
			m
<b>Black</b>	0.8	34	2.4
<b>Purple</b>	1.0	52	2.6
<b>Orange</b>	1.2	76	3.2
<b>Blue</b>	1.4	102	3.4
<b>Yellow</b>	1.6	130	4.2
<b>Green</b>	1.8	162	4.6

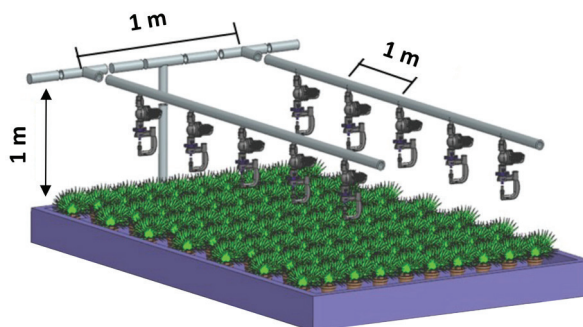
### Mist sprayer for propagation - Layout

- Minimum installation height : 1.0 m'
- Maximum spacing between units on lateral : 1.0 m'
- Maximum spacing between laterals : 1.0 m'
- Maximum distance of lateral from bench edge : 10 cm. Between laterals: 1.0m'

### Mist Sprayer Assembly



Mist sprayer



### Keep in touch!

 [info@metzerplas.com](mailto:info@metzerplas.com)

 [metzer-group.com](http://metzer-group.com)

